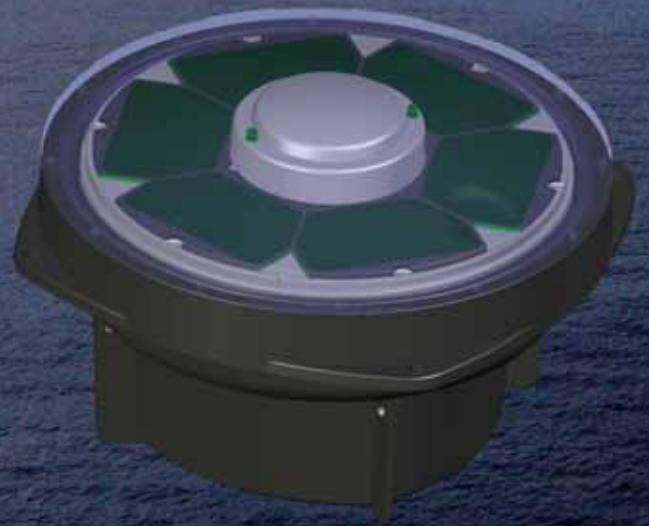


Satlink ELB3010

100% Solar Powered Buoys

Sustainable and efficient tuna fishing

*Provides critical information to skipper
regarding tuna size and tonnage below the buoy
Allows selective fishing of tuna shoals*



*Satellite buoys via Inmarsat for locating and tracking logs
Specially designed for the purse seiner fishing industry
100% solar powered buoy (no battery inside)
Unlimited autonomy
Permanently connected
SIMRAD ES12 echo sounder (optional)*



SATLINK

ELB 3010 Technical Specifications:

- ☆ Weight: 11 Kgr
- ☆ Measurements: 40 diameter x 26 cm high
- ☆ Echo sounder: SIMRAD ES12
- ☆ Power: solar panels and super capacitors
- ☆ No battery inside

ELB 3010 Buoys Control Centre

- ☆ New control centre, fully compatible with previous buoy models .
- ☆ Easy to use
- ☆ Collects buoy information on board automatically
- ☆ The buoy information can be exported to other plotters like Maxsea, Catsat,...
- ☆ Automatic analysis of echo sounder buoys, current, batimetry
- ☆ Fully compatible with Inmarsat Fleetbroadband, Fleet, Iridium, Vsat, ...
- ☆ Satlink recommends Inmarsat Fleetbroadband for on board communications



SATLINK Spain
Tel: +34 91 327 21 31
Fax: +34 91 327 21 69
email: info@satlink.es

SATLINK South America
Tel.: +593 52610151
Cel.: +593 98625166
email: prg@satlink.es

www.satlink.es