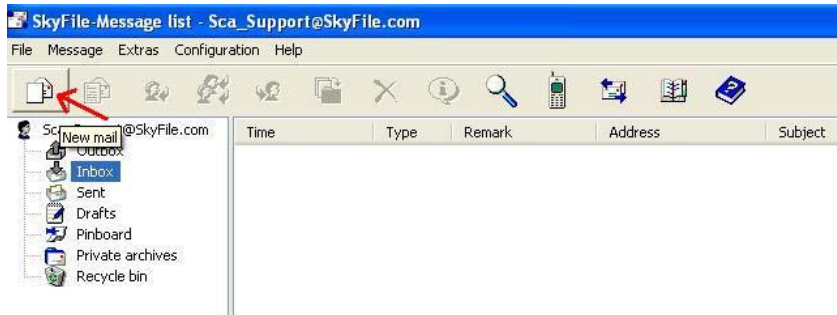
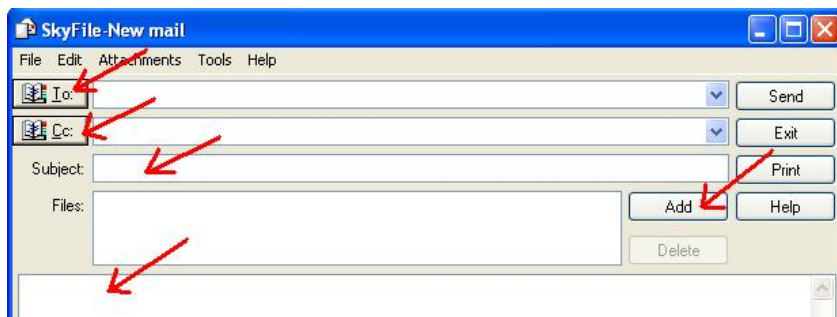


SkyFile Mail – Sending E-Mail messages

1. Click on **New mail** button (or go to **Message > New mail...** from the menu options)



2. a) Add **To:**, **Cc:**, **Bcc:** recipient addresses, or select from your “Address Book” (accessible via the phonebook icon next to the **To:**, **Cc:**, **Bcc:** fields)
 b) Type the message subject in the field provided - **Subject:**
 c) Attach files to message by clicking on the **Add** button
 d) Write message text in the space provided under message options



3. Click **Send** once message is ready to be sent



4. Once an E-Mail message is written and “Sent” and appears in the Message List marked in red (or in the Outbox via “Split” view), your message in reality has not yet been transmitted via satellite. For an immediate, manual data exchange, click on the **Dial now** button (or go to **File > Dial now...** from the menu options). All messages marked in Red (Message List) or in Outbox (Split View) are queued to be sent, pending a satellite data connection

