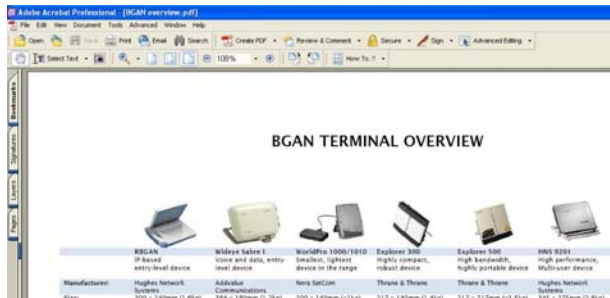
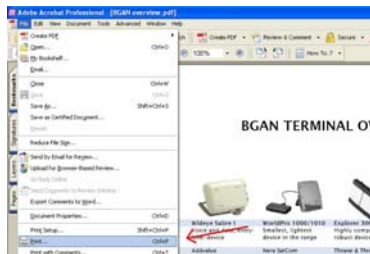


SkyFile Mail – Sending Fax messages

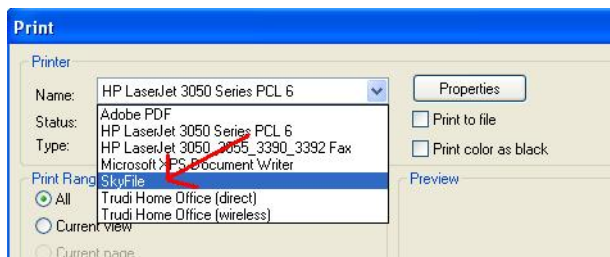
1. To send a fax message, open the relevant document in its application (example: PDF file in acrobat reader or a word doc in Microsoft Word)



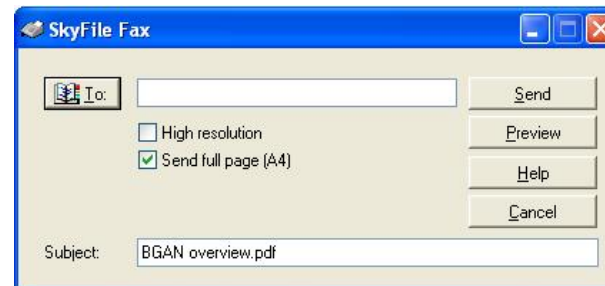
2. Print document by following the application printing procedures (example: **File > Print** from the menu options)



3. Print document to the printer named **“SkyFile”**. If this printer is not listed, you will need to configure “Fax Support” in Skyfile (refer to Skyfile User Manual)



4. A SkyFile Fax box will pop up, prompting you for a destination **To:** number. Enter the destination fax number (including country code), in the **To:** field (for example: +61894305609) or select a destination fax number from your “Address Book” (accessible from the phonebook icon) and click **Send**



5. Once a fax message is “Sent” and appears in the Message List marked in red (or in the Outbox via “Split” view), your message in reality has not yet been transmitted via satellite. For an immediate, manual data exchange, click on the **Dial now** button (or go to **File > Dial now...** from the menu options). All messages marked in Red (Message List) or in Outbox (Split View) are queued to be sent, pending a satellite data connection

