

SKYFILE MAIL INSTALLATION GUIDE

PURPOSE

To define the steps required for installing Skyfile Mail

INSTALL GUIDE

STEP 1 DOWNLOAD SOFTWARE

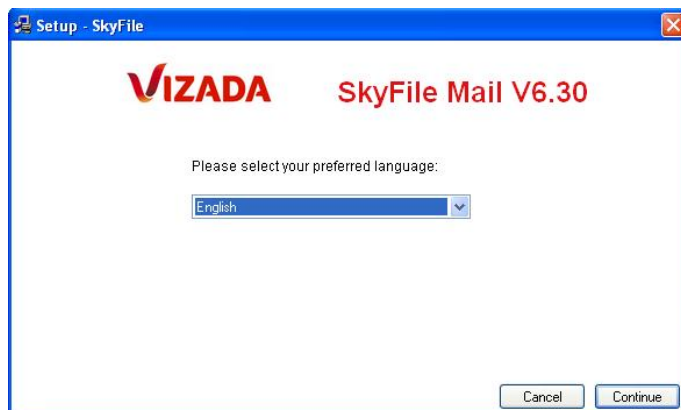
You can download the software directly from the Vizada website at www.vizada.com or alternatively you can contact Satcomms Australia Customer Service for further assistance.

STEP 2 INSTALLATION SETUP

Run the [setup.exe](#) file to begin your installation

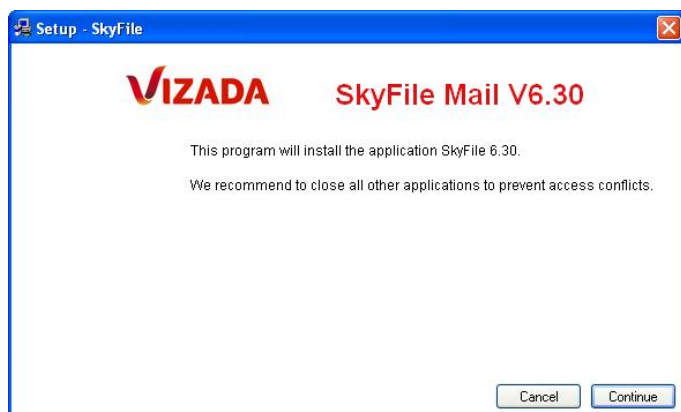
STEP 3 SETUP – PREFERRED LANGUAGE

You will be prompted to select your preferred language. Choose your preferred language from the list of options and click [Continue](#) to proceed



STEP 4 SETUP – BEGIN INSTALLATION

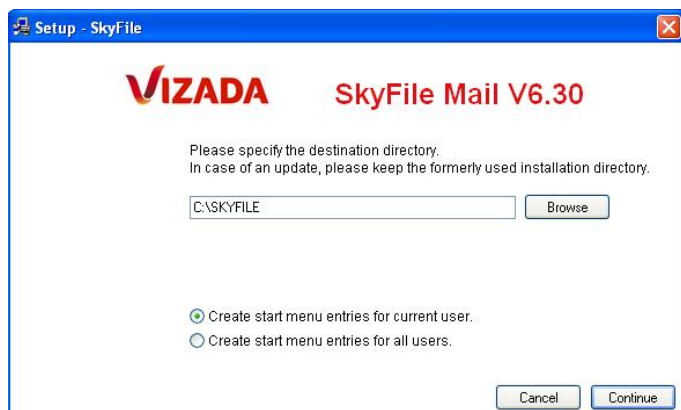
You will be prompted that recommendation is to close all other programs and to click [Continue](#) to proceed



STEP 5 SETUP – DESTINATION DIRECTORY

- You will be prompted to confirm the destination directory for installation (it is recommended to leave as default of C:\SKYFILE)
- You must also choose to create the Windows Start menu entries for either the current user or all windows users

Click **Continue** to proceed



STEP 6 SETUP – INSTALLATION COMPLETE

The setup will install the software on your PC and will confirm once installation is successful. Click **Finish** to proceed



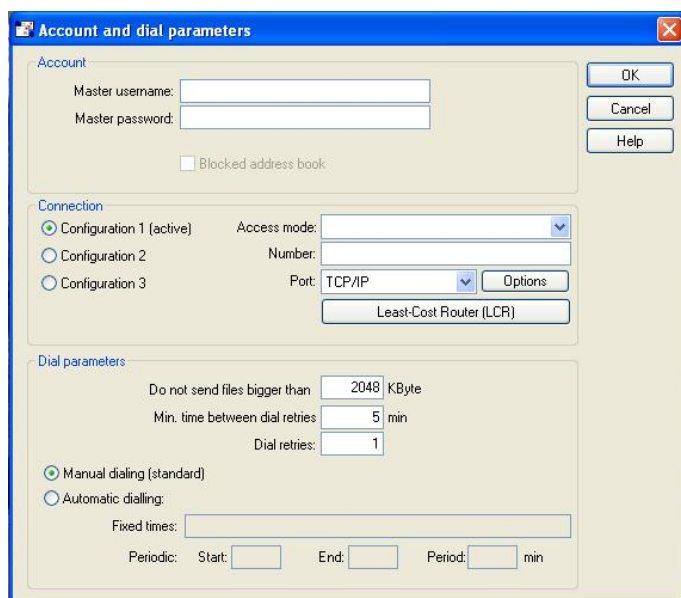
STEP 7 SETUP - CONFIGURATION

If no configuration data is found, you will be prompted to confirm if you are restoring from a backup. If you are restoring from a backup, click **Yes** to proceed, specify the backup location and continue to restore your backup. If this is a new installation, click **No** to proceed.



STEP 8 SETUP – CONFIGURATION OF ACCOUNT AND DIAL PARAMETERS

- Enter your account details provided when registered (registration is required for Skyfile Mail). **** If you have not registered for Skyfile Mail, please contact Satcomms Australia Customer Service for further assistance.**
- Enter your connection configuration details beginning with your access mode (Example: Inmarsat Fleet 33 T&T). We recommend accepting the default parameters for your selected service.
- Choose the Device your modem is connected via (Example: COM1) Again we recommend accepting the default parameters
- Leave the default Dial Parameters and click **OK** to proceed



STEP 9 SETUP – CONFIGURATION SUBACCOUNT

You will be prompted to confirm if you wish to restore your former subaccount configuration (from Skyfile server) if account has previously been used. Click **Yes** or **No** to proceed



STEP 10 SETUP – CONFIGURATION COMPLETION

You will be prompt to setup Skyfile Mail as your default mail handler and to setup Fax Support. Click **Yes** to accept or **No** to ignore. Your Skyfile Mail installation is now complete